

Cable Management for Solar



Commercial and Utility Grade Installations





ABOUT US

Snake Tray is a leading manufacturer of cable management solutions for commercial and utility grade solar installations. Our cable management products are designed with features to substantially lower the total cost of construction. Our team works closely with the design engineers to develop and manufacture the most cost-effective solution for the installation.

Made in USA



Snake Tray® is Green and Proudly Powered by the Sun!

Snake Tray is committed to manufacturing products that minimizes the impact on the environment.

We are proud to be the first in our industry to manufacture utilizing solar power from our own roof top solar array. We have streamlined our manufacturing methods and have adopted greener practices including reducing waste, saving energy, and utilizing resources wisely. We stand ready to help building owners, architects and design engineers reach their sustainable building goals.

Snake Tray® Cable Management

- Made of 100% recycled steel
- Products designed to create no material waste
- Compact shipping and packaging
- US made with distribution centers throughout the USA
- Reusable and 100% reclaimable products



Customer List

The following companies and organizations are just a few who have made a commitment to superior cable management with Snake Tray products.

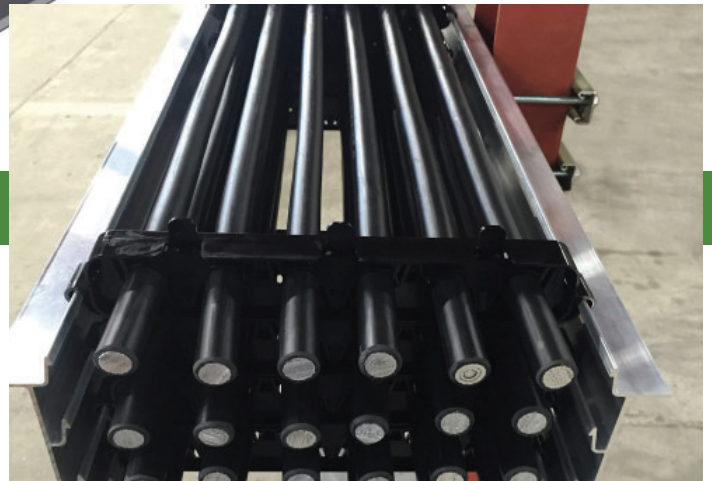
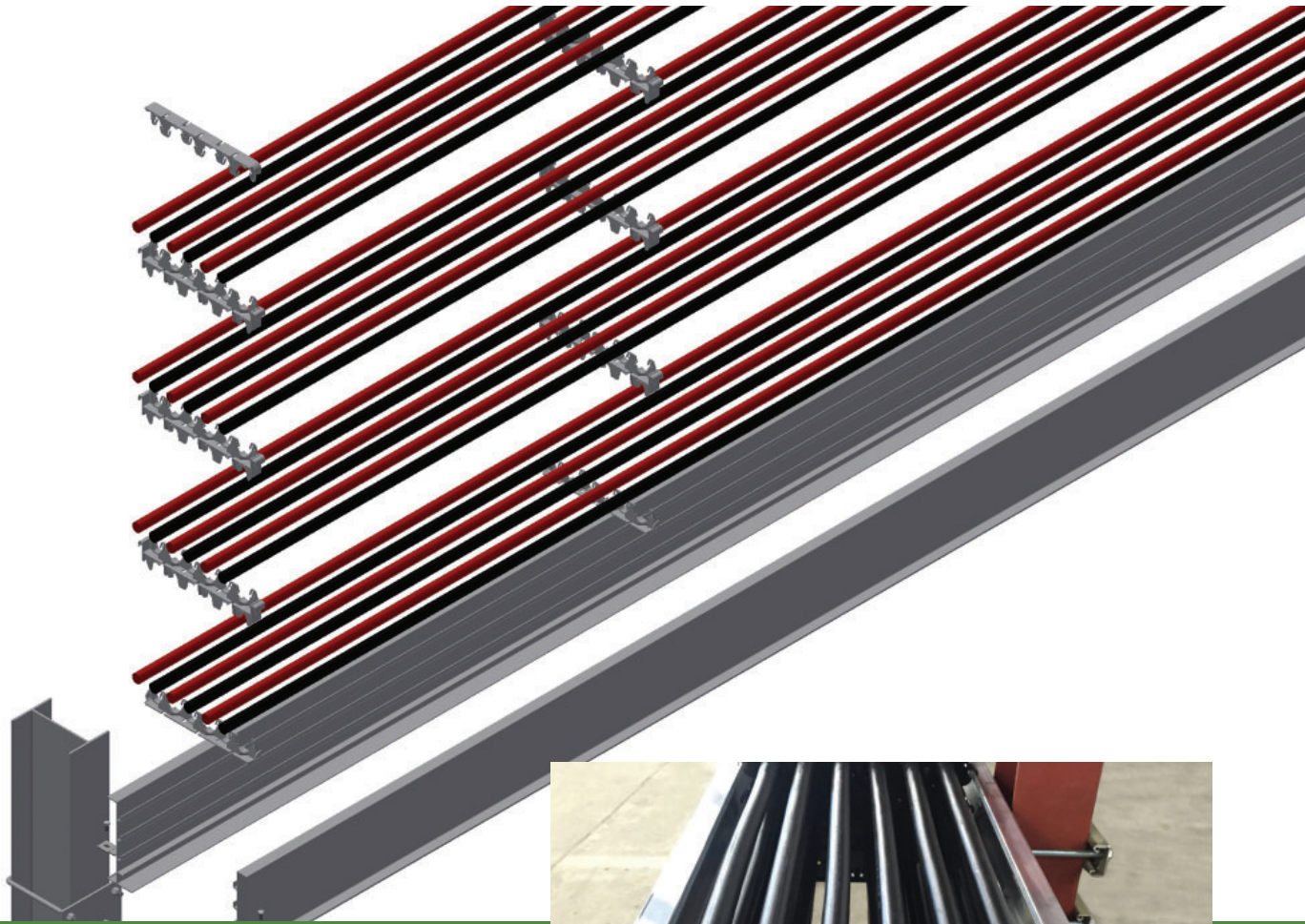
A.G. Edwards
 ABC TV
 Aer Lingus
 Amazon.com
 American Airlines
 Amica Insurance
 AT&T
 Barclays Bank
 Bank of America
 Bloomberg
 Boeing
 Bookspan
 BP
 Caterpillar
 CIA
 CitiBank
 Coca Cola
 CS First Boston
 CVS
 Department of Homeland Security
 Deutsche Bank
 Direct TV
 Disney
 Duquesne Light Company
 Ebay.com
 EDS
 Edward Jones
 EMC
 Enterprise Rent-A-Car
 ESPN
 eSurance
 Exxon
 FAA
 FBI
 Fox News
 Federal Reserve Bank
 Ford Motor Company
 General Dynamics
 Google
 Harvard University
 Honda
 IBM
 Intel Corp.
 Key Bank
 Jane Street Capital
 Johns Hopkins University
 J.P. Morgan Chase
 K-Mart
 Lever Brothers
 Lockheed Martin
 MasterCard
 McDonalds Corporation
 McGraw Hill
 Merck
 Merrill Lynch
 Met Life
 Montefiore Medical Center
 Motorola

NASA
 National Library of Medicine
 New York Stock Exchange
 North Dakota State University
 NY City Fire Department
 PAYCHEX
 PepsiCo
 Pfizer
 Pharmacia & Upjohn Co.
 Philip Morris
 PSE&G
 Puget Sound Naval Shipyard
 Quest Diagnostics
 Raytheon
 Reuters
 SAIC
 Siemens
 Southwestern Bell
 Sprint
 Staples
 State of North Carolina



State of Tennessee
 State University of New York
 Target
 Teachers Insurance Union
 The Gap
 The Kennedy Center
 Travelocity
 United Health Group
 United Nations
 University of Maryland Children's Hospital
 UPS
 US Air Force
 US Army
 US Coast Guard
 US Department of State
 US Marines
 US Navy
 US Postal Service
 Vanderbilt University
 Vanguard Solar
 Verizon
 Wells Fargo
 World Trade Center
 Yale University

Solar Snake Max™ - Rail Mount System



Utility Grade Cable Management for High Voltage Cables

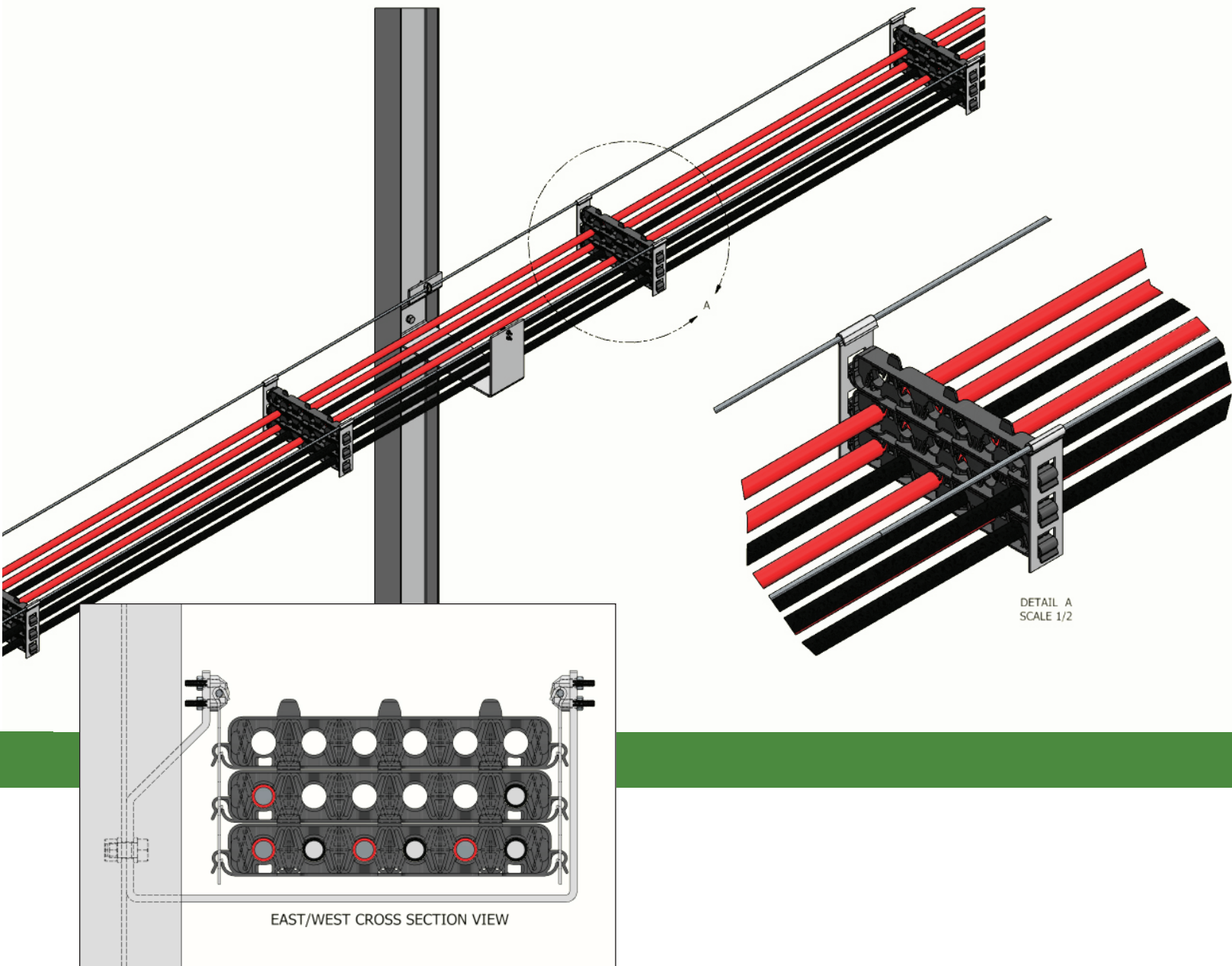
**Carry PV Energy On 50% Less Cable,
No Need To De-Rate Cables Anymore!**

Solar Snake Max™ is our new patented cable management system for utility grade installations. The easy snap together components maintain NEC 310.15 code compliant cable separation. Construction cycle times and material costs will substantially decrease with this new innovative approach to managing high voltage cables.

Rail Mount Benefits

- No de-rating of cable required with open air design
- Maintains code compliant separation
- Easy snap together components
- No field fabrication required
- Mounts to any style of vertical pilings or poles
- Can be mounted to the ground for extreme low-profile solar arrays used in lower latitude areas of the world

Solar Snake Max™ - Messenger Wire System



Messenger Wire Benefits

- No de-rating of cable required with open air design
- Maintains code compliant separation
- Easy snap together components
- No field fabrication required
- Mounts to any style of vertical pilings or poles
- Most economical system in todays' market
- Allows for longer support distances
- Used for a wide variety of varying elevations

Solar Snake Tray®



Cable Management for Solar Installations that Drastically Lowers Installation Costs!

The world's only weatherproof, hand bendable cable conveyance that quickly and securely carries DC circuitry from solar panels to their terminations. Change directions easily by bending Solar Snake Tray with your own two hands.

- Built-in mounting rings for infinite mounting options
- Trays connect together with a single connector for a 15-second bonded attachment tray to tray
- Patented "lobster trap" design, ensures effortless outdoor cable installation, while trapping and protecting the cables from hurricane force winds over 120 mph

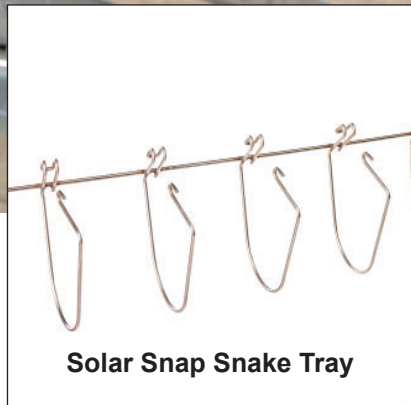
Utility-Grade Solar Snake Tray®

Solar Snake Tray for Fixed Tilt Arrays



Solar Snake Tray for Fixed Tilt Arrays

- Next generation of Solar Snake Tray developed specifically for large-scale ground-mounted plants
- Like original Solar Snake, it is hand bendable, has integrated easy mounting points and nests for reduced material handling
- Mounts to the Z or C purlin of any racking system
- Different versions manage string cables, feeder cables, or both
- In use by major EPC around the USA and globally



Solar Snap Snake Tray



Solar Snake Tray

Solar Snap Snake Tray for Messenger Wire

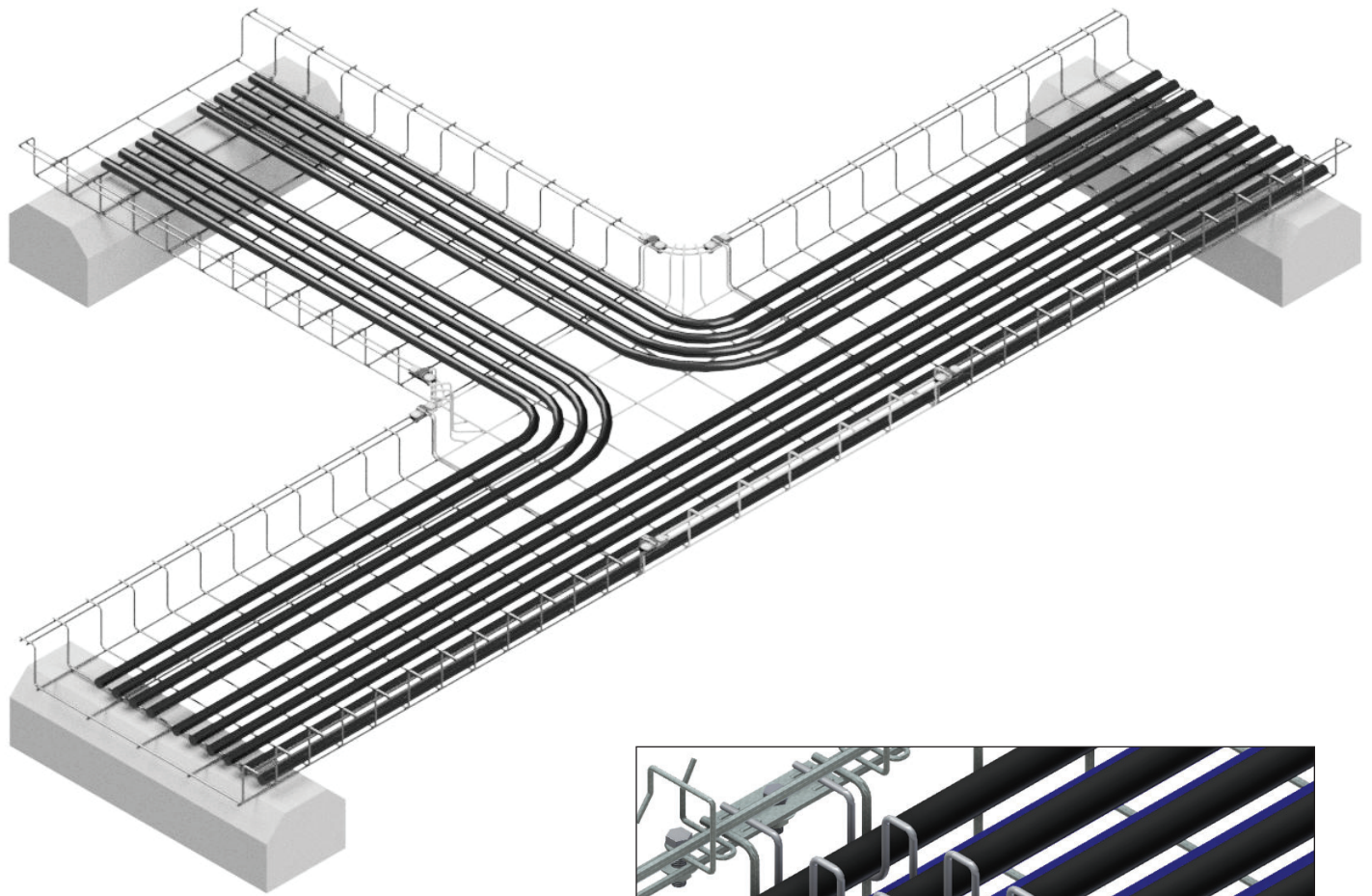
This cable conveyance system suspends with messenger wire and offers a continuous support of cables.

- Attaches to messenger wire
- Multiple configurations available

Solar Snake Tray for Messenger Wire

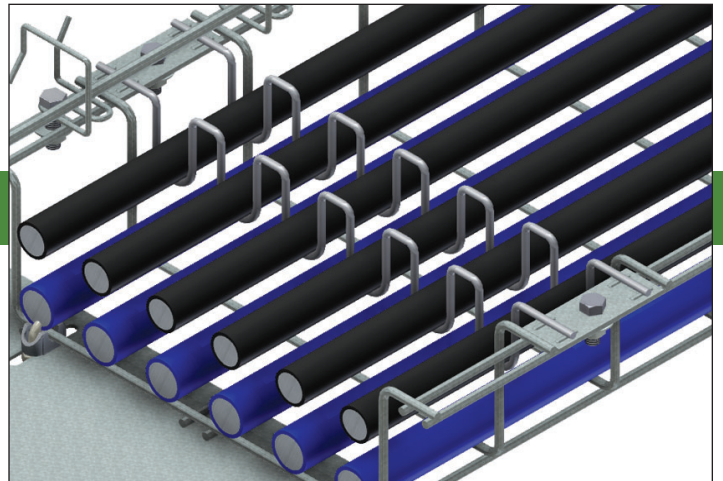
- Significantly reduces installation costs when compared to traditional methods such as trenching
- Suspended from a messenger wire fixed to the beams of any plant, does not require any additional support
- Suitable for the larger AC or DC feeder cables as well as the string cables on single axis tracker plants

Solar Mega Snake Tray®



Cable Management for DC and AC Feeder Cables

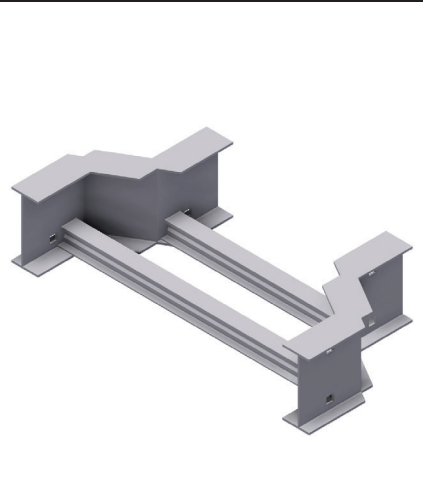
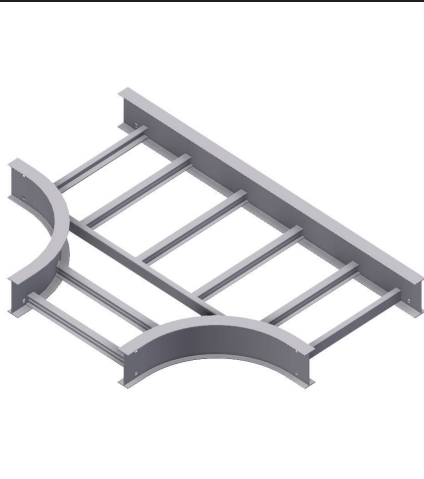
- Built-in mounting rail for attaching accessories including combiner boxes
- Nests together for economical shipping and easy material handling
- Available in Power Coated Gray and Stainless Steel for climate specific applications



Mega Snake Air Separator

This auxiliary component attaches directly to the Mega Snake's mounting rail to provide code compliant separation between high ampacity conductors. Can be configured to the customer's specific cable schedule.

Aluminum Cable Tray®

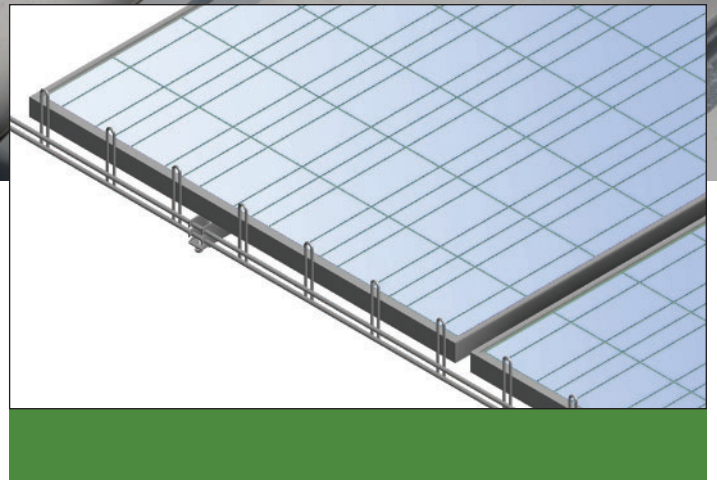


Snake Tray now offers Aluminum Cable Tray which is light weight for easier installation while offering a high loading capacity to manage large cable runs. Components are easy to attach with our quick connection system.

Benefits

- Light weight aluminum
- High loading capacity to handle large cable runs
- Easy connection system

Solar Panel Ice Guard



Snake Tray's Solar Panel Ice Guard is specifically designed to help minimize sheet flow of ice on the surface of the solar panel. The system is designed to hold back ice material up to the top edge of the guard. Our Ice Guard easily mounts to the frame of any solar panel. It is a great solution to minimize the possibility of injury from falling ice in areas with pedestrian traffic such as parking lots and train stations.

Benefits

- Universal Mounting System
 - Easy Installation
 - Works with any flanged solar panel
 - Ships from stock
-

Accessories



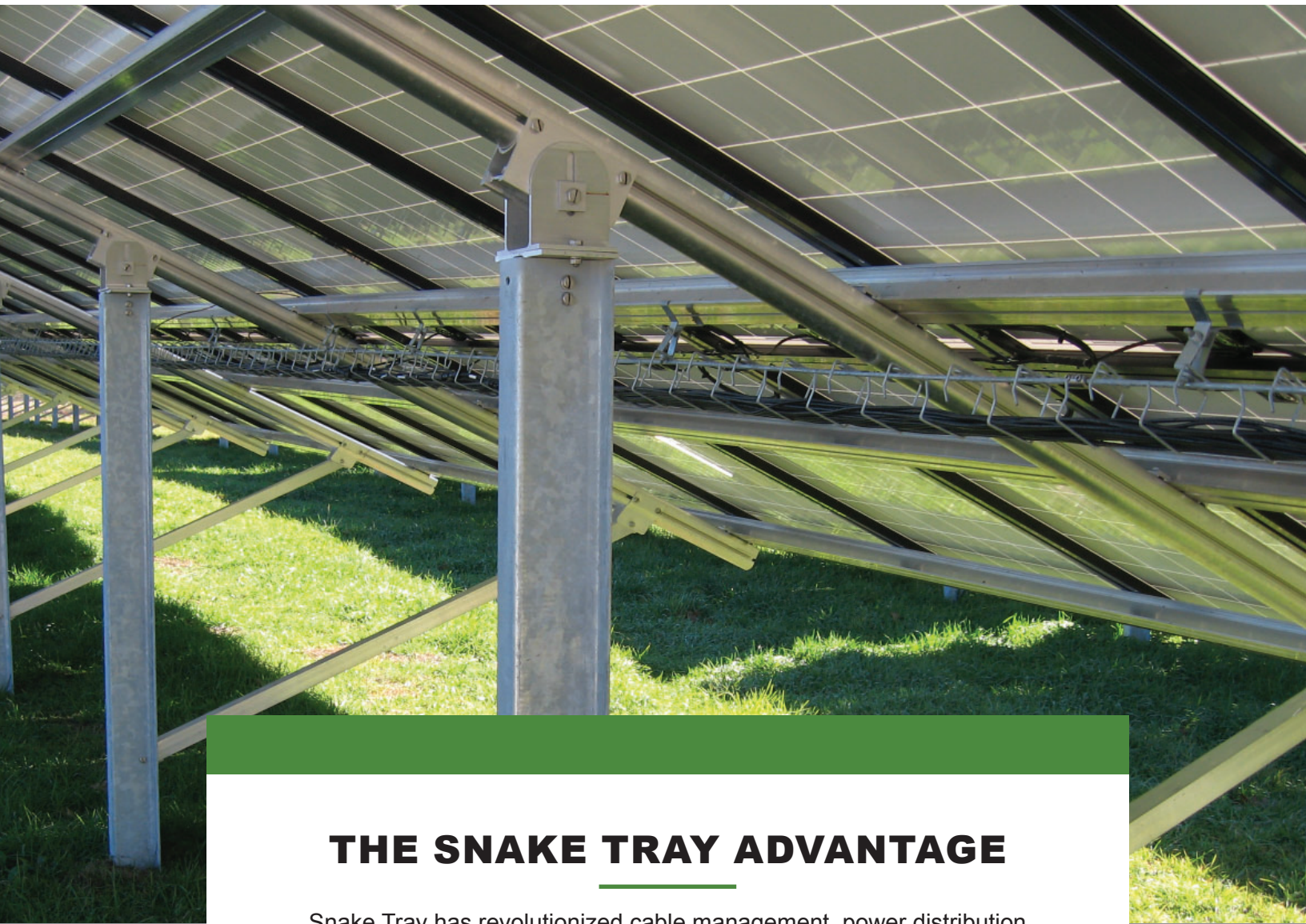
Solar Snake Charmer Cable Manager

This is the long-awaited solution for inspector's request to get connectors and cables out of water and snow on rooftops. Snake Charmer snaps into place under the panel to carry connectors safely and securely at the rear of the panel. No tools required.



Snake Tray Ballasted Roof Mount Anchor for Cable Trays and Conduit

Snake Tray's ballasted roof mount anchors use common cement block ballasts to support Solar Snake cable tray, carrying PV cables from solar arrays to combiner boxes and inverters. It is also available with a strut mount system as well as many custom brackets to attach virtually any roof top ballasted component. Padding on base protects roof membranes.



THE SNAKE TRAY ADVANTAGE

Snake Tray has revolutionized cable management, power distribution and enclosures with a variety of innovative products designed to install quickly, reduce labor and material costs, and significantly drive down the total cost of construction. All of our products are made in the USA and stocked throughout the USA to ship on time for our customers. Our engineers and sales team stand ready to assist you with take offs, bill of materials and product solutions. Call us at 800-308-6788 to discuss your next project.



Snake Tray®
291 Skip Lane | Bay Shore NY 11706 | USA
T: 800-308-6788 | 631-674-0004
www.snaketray.com | MADE IN USA

Document No. MKTG-0003 | Sept 2019 | © 2019 Snake Tray

Snake Tray® products are covered by one or more of the following patents: #6637704, #6637165, #6463704, #6460812, #6449912, #6361000, #6347493, #6019323, #6347493, #6449912, #6460812, #5953870, #5839702, #6926236, #7168212, #7959019, #8783628, #8985530, #8622679, #9074707. Other Patents Pending.